

CheckCNTY

This utility is for users who are challenging USACA.
It supports not only US County check but eQSL user check.
EQSL check is only for KL7,KH6 and W



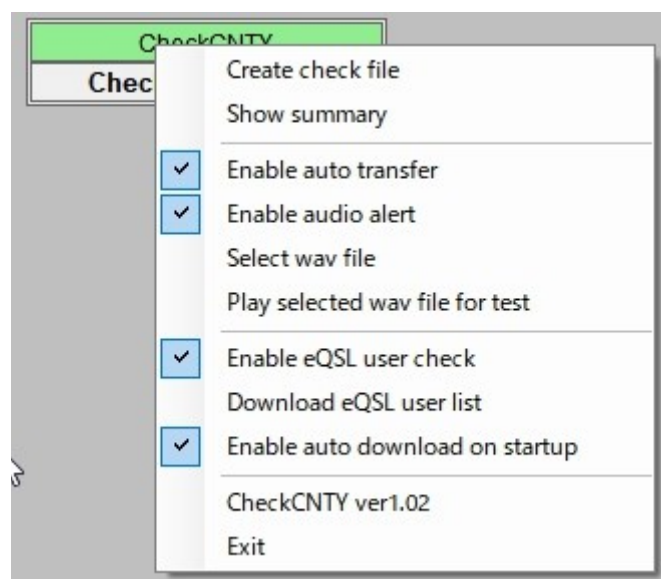
Important note:

a) CheckCNTY read your Logbook adif whenever it starts. You should export Logbook in adif before you run CheckCNTY.

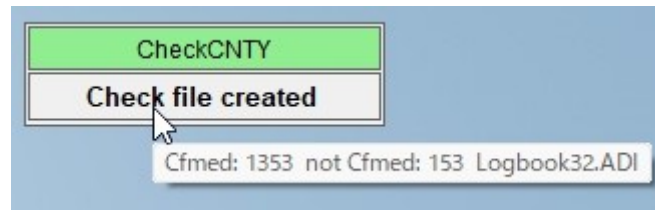
b) eQSL user list file (AGMemberListDated.txt) should be placed in same folder as CheckCNTY.exe. (eQSL user check is option)

c) It is recommended to use callsign lookup to populate State and US County in Logbook entry window. Please remember that provided info is not always perfect.

1. Set CheckCNTY.exe to run as administrator.
2. Run Logger32.
3. Run CheckCNTY. It is displayed at most top-left in your display. Drag title bar to move position. Titlebar should be highlighted with Green color. If it is not then CheckCNTY will not work. Set CheckCNTY.exe to run as administrator.
4. Right click on title bar to show menu.



5. Click "Create check file" and select adif path. CheckCNTY starts to read adif. "Check file created" is displayed. When you start CheckCNTY next time it reads adif automatically.
6. Move mouse over "Check file created". Number of confirmed counties, number of not confirmed counties and Logbook file name are displayed as tool tips.



7. If you want to check eQSL user then check "Check eQSL user check" then click "eQSL user list" to download. It is saved in the same folder as CheckCNTY.exe. Close CheckCNTY then open again.
If you check "Enable auto download on startup" it will download automatically at every startup.
8. Message "new county" or "not confirmed" can be sent to QSLMSG field in Logbook entry window. Check "Enable auto transfer" in the menu.
"eQSL YYYY-MM-DD" is sent to COMMENT field in Logbook entry window if option is checked.
9. It is possible to play alert sound when "not confirmed" or "new county" is displayed. Check "Enable audio alert" in the menu and select WAV file path.
10. When State and County are populated in Logbook entry window, message is displayed in sub window. Drag to move position.
11. Sub window disappear when Logbook entry window is cleared.
12. Click "Show CNTY summary" to show CNTY summary window.



If you have any problem then let me know by direct email. My email address is OK in QRZ.com.

Enjoy

73 de aki
JA1NLX