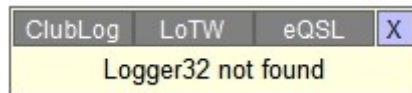


ClubLogUpload ver4.14

- Always run ClubLogUpload together with Logger32 (it does not work as stand alone)



General features

Primarily

- Real time upload to ClubLog.

and

- Export/upload LoTW.adi to LoTW via TQSL (need manual operation)
- Export/upload eQSL.adi to eQSL (need manual operation)
- Download lotwreport.adi from LoTW web page (need manual operation)
- Download QSO report in ADIF from eQSL (need manual operation)
- View ClubLog page, LoTW page and eQSL page.
- Display frequency and radio name.

Install

Download ClubLogUpload.zip. Unzip. <http://ja1nlx.web.fc2.com/logger32/UtilityProgram/UtilityProgram.htm>

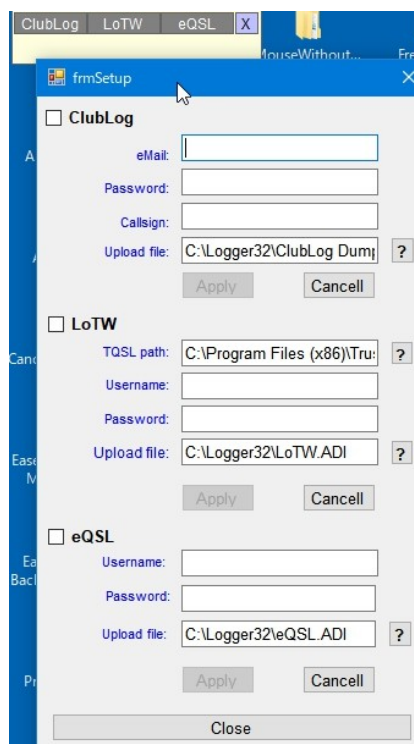
Place ClubLogUpload.exe anywhere you prefer. I recommend you to set ClubLogUpload.exe as one of utility program in Logger32 and run from Utility menu.

Set "Run as administrator" is not always necessary.

When running for the first time

follow the steps below.

1. Run Logger32.
2. Run ClubLogUpload. You see this. ClubLogUpload main window appears at top-left and Setup window appears at same time.



3. You have to decide which feature you use.
4. Check feature you want to use and type in empty box correctly. Finally click apply
 "Upload file" box are populated with default path. If you use different path then click "?" button to search and select correct path.

This is a sample where all features are checked.

The screenshot shows the 'frmSetup' window with three sections, each with a checked checkbox:

- ClubLog:**
 - eMail: shida0205@my.email.ne.jp
 - Password: xxxxxx
 - Callsign: JA1NLX
 - Upload file: C:\Logger32\ClubLog Dummy ?
 - Buttons: Apply, Cancel
- LoTW:**
 - TQSL path: C:\Program Files (x86)\Tru ?
 - Username: ja1nlx
 - Password: yyyyyyy
 - Upload file: C:\Logger32\LoTW.ADI ?
 - Buttons: Apply, Cancel
- eQSL:**
 - Username: ja1nlx
 - Password: zzzzzzz
 - Upload file: C:\Logger32\eqsl.ADI ?
 - Buttons: Apply, Cancel

At the bottom of the window is a 'Close' button.

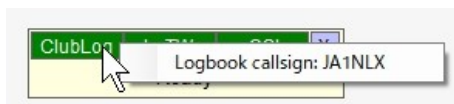
5. Click "Close" button. You need to re-run ClubLogUpload. You will see this.



While pressing mouse button on light yellow box and drag to move this window anywhere. This window size is fixed.

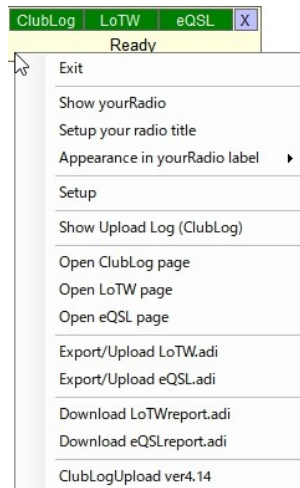
Note that "ClubLog", "LoTW" and "eQSL" are highlighted with green color. This is because all features are checked in Setup window. Click "X" button to close ClubLogUpload.

Right click on "ClubLog". Your radio name is displayed.



Menu (1)

Right click on yellow box to show menu. You see like this.



<Exit>

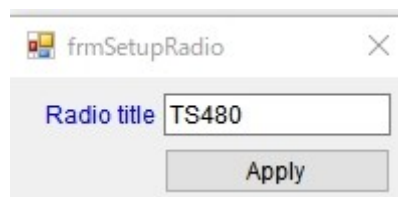
Click to close ClubLogUpload.

<Show your radio>

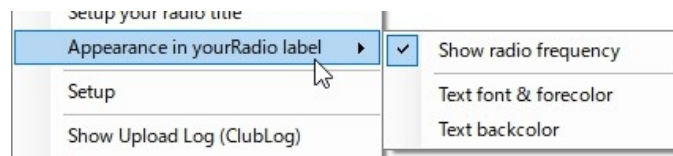
Check to show to display frequency and radio title.

<Setup your radio title>

Click to show setup radio title window. Type radio title and click “Apply” button.



<Appearance in your radio label>



if “Show radio frequency” is checked, then radio title and frequency are displayed like this. While pressing mouse button on this window and drag to move this window anywhere. This window size is fixed.



<Setup>

Click to show setup window.

<Show upload Log (ClubLog)>

Click to show upload log.

<Open ClubLog page>

<Open LoTW page>

<Open eQSL page>

Click to open each page with your default browser.

Upload QSO to ClubLog

ClubLogUpload always upload QSO to ClubLog when QSO is logged in Logger32. You need no manual operation.

If QSO is uploaded to ClubLog successfully then it shows like this.



If upload fail then you see this. Check your email address/password/callsign for ClubLog in Setup window.



Menu (2)

<Export/Upload LoTW.adi>

When you click this option,

1. ClubLogUpload ask Logger32 to start "Export LoTW file" process. Proceed with the process manually.
2. When Logger32 complete to write LoTW.adi file, ClubLogUpload ask Logger32 to delete LoTW_SEND flag and set LoTW_SEND flag to "Y".
3. ClubLogUpload ask TQSL to run.
4. Proceed with TQSL step-by-step manually.

Note: ClubLogUpload ignore any response from LoTW.

<Export/Upload eQSL.adi>

When you click this option,

1. ClubLogUpload ask Logger32 to start "Export eQSL file" process. Proceed with the process manually.
2. When Logger32 complete to write eQSL.adi file, Logger32 delete eQSL_SEND flag and set eQSL_SEND flag to "Y".
3. ClubLogUpload start to upload eQSL.adi.
4. When eQSL receive eQSL.adi and complete the process, this window appears to show the result.



5. Click "X" to close this window.

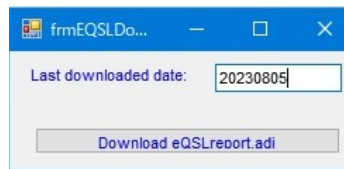
<Download LoTWreport.adi>

If you click on this item, then your default browser open LoTW log-on page. Proceed with log-on to show download your QSO page. You may need to check "Include QSL details". It depends on your Sync LoTW option. Click "Download report" button. The downloaded file is saved in the folder where you set in your browser setting.

The screenshot shows the 'Your QSOs' page on the LoTW website. On the left is a sidebar with a 'QSOs Menu' containing 'Query', 'Download Report', and 'Statistics'. The main content area has a yellow header 'Your QSOs' and a yellow button 'Download Report'. Below the button, text says 'Here you can download a report of QSLs received. The report file is in ADIF format.' There are input fields for 'Show QSLs received since:' (with '2023-08-05' entered) and '(YYYY-MM-DD)'. Two checkboxes are present: 'Include QSL details:' (checked) and 'Include QSO station details' (unchecked). A dropdown menu for 'Your Call Sign:' shows '- Any -'. At the bottom is a 'Download report' button.

<Download eQSLreport.adi>

If you click on this item, then new small window appears. Click "Download eQSL report.adi" button.



Your default browser open this page.



Right click “.ADI file” and click “Save link as...”



The downloaded file is saved in the folder where you set in your browser setting.

Enjoy
73 de aki JA1NLX